

International Conference of the Slovak Society of Chemical Engineering

CALL FOR
PAPERS

#SSCHE2025
May 27 - 30
Demänovská Dolina

NEW VENUE



sschi

SLOVAK
SOCIETY OF
CHEMICAL
ENGINEERING

CHAIRMAN MESSAGE

Dear colleagues and partners,

I am pleased to invite you to our technology conference that bridges the needs of industry, academia, and legislation. Dialogue is essential for sustainable progress. For more effective knowledge transfer and innovation dissemination, we have updated the different sections of the scientific part to better reflect current research challenges. At the same time, the industry section prepared this year will tackle the areas of measurement and control, as well as energy transformation. To make the news even more exciting, in 2025, the conference will move from the legendary premises of hotel Hutník to the new location of hotel Ski & Wellness Residence Družba in Demänovská dolina. I believe that the change of air will support our efforts to bring the best possible services to the conference participants. Do not hesitate to book your place at the conference. The event also includes a networking social evening, which is perfect for creating new connections. Prizes for the best conference contributions are once again available for young researchers. I look forward to enjoyable discussions and intense knowledge transfer.

Ján Janošovský

Chairman of the Slovak Society of Chemical Engineering



TOPICS OF THE CONFERENCE

- 01 Process Design and Process Intensification
- 02 Energy Transition and Circular Economy
- 03 Digitalization and Process Control
- 04 Bioengineering and Biotechnology
- 05 Separation Processes and Transport Phenomena
- 06 Reaction Engineering and Catalysis
- 07 Environmental Chemical Engineering
- 08 Pharmaceutical Engineering and Processes
- 09 Risk Management and Process Safety
- 10 Material Engineering and Design



CONFERENCE VENUE

The conference will be held in *Hotel Ski & Wellness Residence Družba***** located in Demänovská dolina, the most beautiful valley of the Low Tatras, on their northern slopes. Low Tatras represent an extensive mountain system with the main ridge stretching 82 km east – west. The highest peaks exceed an altitude of 2 000 m above sea level.

The surroundings of the hotel and the region of the Low Tatras offer many opportunities for hiking enthusiasts in summer. You can start most of the tours directly from the hotel. Near the hotel there is Vrbické lake, in the wider vicinity Demänovská Ice Cave, Demänovská Cave of Freedom, Liptovská Mara (reservoir).

Book your accommodation directly at the hotel using the promo code **SSCHE2025**, in order to get a discount. Those who wish to stay in the room alone should contact the hotel reception directly with the promo code.

The hotel offers a choice of up to 18 types of rooms and the price for accommodation starts at **57 € per person per night in a double-bed room** including local tax, breakfast and free entry to the pool from 07:30 - 10:00.

All participants and accompanying persons are invited to attend the *conference party* which will be held at the hotel on Wednesday, May 28, 2025.

IMPORTANT DATES

March 15
Contribution submission - lecture

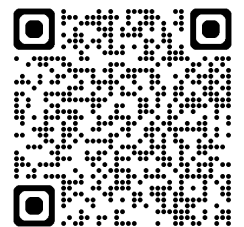
April
Preliminary program

April 15
Contribution submission - poster

April 15
Abstract and fulltext submission

May 27-30
Conference

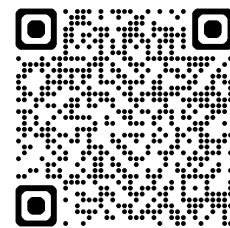
HOTEL
BOOKING



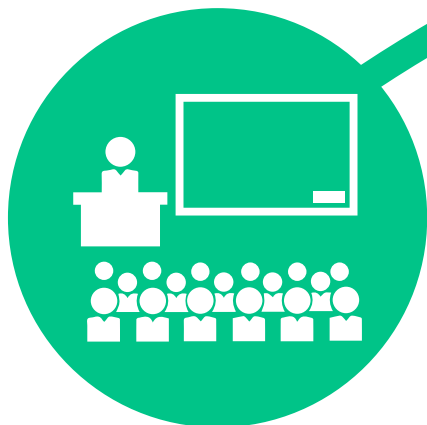
PRESENTATION FORM

Participants are invited to apply for oral or poster presentations. Participants are required to submit short description of the submitted contribution together with its title and preferred form of presentation. Registration for the conference is available online at <https://sscheconference.sk>

CONTRIBUTIONS REGISTRATION



LECTURE 15 + 5 min



POSTER 87x118 cm



PUBLICATION OPTIONS

Participants will receive printed program as well as link for download of book of abstracts and full-texts with an ISBN.

All participants are encouraged to submit their conference lecture and poster presentations in the form of original papers or reviews to the journal Chemical Papers (CiteScore2023 = 3.9 - Q2).

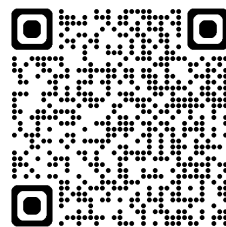
STUDENT POSTER AWARD

Student Poster Competition with awarding of three best posters judged by scientific committee will be held.

This year, three best posters will be awarded with **250 €** each. Students can register for the poster award competition in the conference system.



CONFERENCE FEES



MORE
INFO

REGISTRATION **BEFORE FEB 28, 2025**

Regular participant	450 €
Member of SSCHI	420 €
Student	380 €

Conference registration fee includes conference materials, proceedings, access to sessions, conference party, coffee breaks and welcome drink. *This year, the registration fee includes complete boarding.*

REGISTRATION **AFTER FEB 28, 2025**

Regular participant	490 €
Member of SSCHI	460 €
Student	380 €

Accompanying persons can not be co-authors of any contribution. Fee for accompanying person is **190 €** including *complete boarding* and conference party.

Conference fees will further rise from the second half of April 2025.

COMPANY PRESENTATION

Are your products or services relevant to the conference topics? Then SSCHE 2025 is the right conference for you place. We offer you the opportunity to advertise in the printed programme, which is distributed to every conference attendee. If you are interested in live contact with the participants, we can provide you with a stand at the conference venue. If you are interested in any form of corporate presentation, please contact us at sschi@sschi.sk

ABOUT THE SOCIETY

SSCHI – Slovak Society of Chemical Engineering is the official representative of European Federation of Chemical Engineering in Slovakia. Since 1972, we have been bringing together students, graduates, enthusiasts and supporters of the field of chemical engineering. For more information visit www.sschi.sk/en/

CONFERENCE SERVICE

Ing. Barbora Dudášová

Institute of Chemical and Environmental Engineering

Faculty of Chemical and Food Technology

Radlinského 9

812 37 Bratislava, Slovakia

e-mail: sschi@sschi.sk

tel: +421 259 325 250

mobile: +421 918 674 250

<https://sscheconference.sk>

